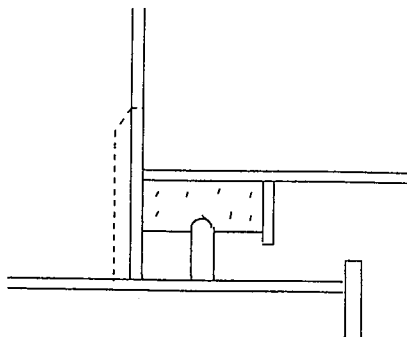


## 7) Load supporting method ;

The hatch cover to be supported by means of skirt touch.

Hatch side and hatch end



## 8) Hatch cover operation.

8-1) Hatch cover to be opened/closed under condition

- Heel of 3 degrees (Maximum)
  - Trim of 2 degrees (Maximum)
- ] Static condition.

8-2) Simultaneous operation not to be considered, i.e., only one pair (2 panels) shall be opened but 2 pairs or more than 2 pairs not be operation at the same time.

## 8-3) Operating method

Hatch covers are to be operated by means of external hydraulic cylinders.

8-4) Operating time to be about 3 min/hatch (about 7 m/min) at oil temperature is about + 20°C.

8-5) Emergency operation of hatch cover to be made by portable power unit.

9) Hatch cover lifting device ; Not to be considered. i.e., no lifting jack.

## 10) Cover cleating ;

- Normal cleating : Manual quick acting cleats.
- Prevent for thermal deformation : Manual screw bolt cleats.